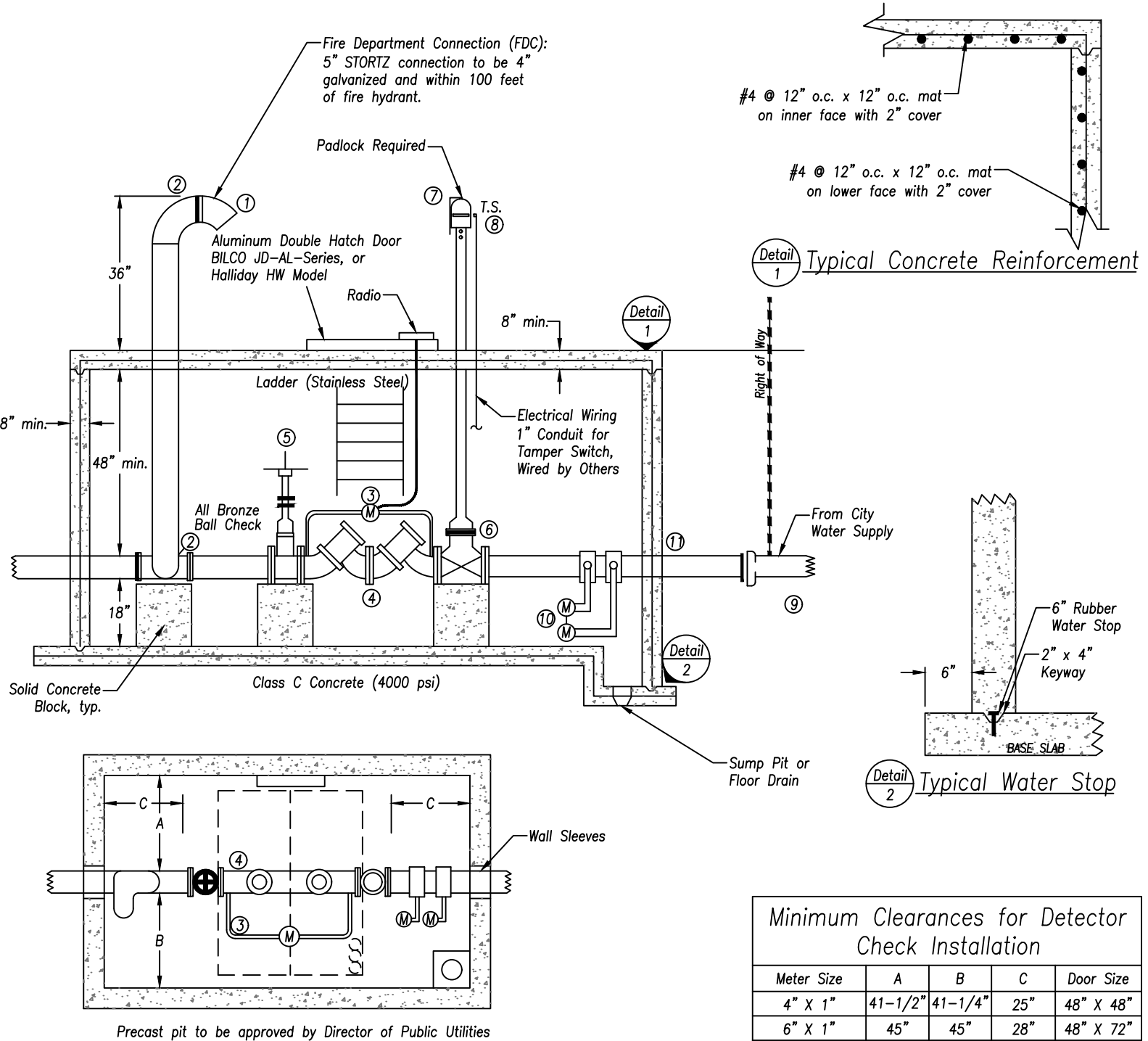


### Fire Line Meter Vault with Double Check Detector Assembly

DATE: 05/04/2020

SCALE: NONE

FILE: 2020-023.DWG



Precast pit to be approved by Director of Public Utilities

**Valve Legend:**

- ① 4" X 5" STORTZ Connection with 30° Turndown and Blind Flange
- ② 4" Galvanized 90° Elbow
- ③ Bypass Line with Meter, Radio, and Double Check Backflow Preventer
- ④ Double Check Detector Assembly (meets or exceeds ASSE 1048 AWWA C510-97)
- ⑤ Valve, O.S.&Y.
- ⑥ Flanged Resilient Wedge Indicator Post Gate Valve (meets or exceeds AWWA C509 and C515)
- ⑦ Indicator Post
- ⑧ Potter Tamper Switch M PCVS-2, Two Sets of Contacts, 120V
- ⑨ Pressure Tap to City of Fairfield Specifications
- ⑩ Valved and Metered Domestic / Irrigation Services
- ⑪ Class 53 Ductile Iron Pipe and Fittings (meets or exceeds AWWA C151 AND C153). Domestic and Irrigation Backflow Preventers are Required.
- (M) Water Meter

#### Minimum Clearances for Detector Check Installation

Meter Size	A	B	C	Door Size
4" X 1"	41-1/2"	41-1/4"	25"	48" X 48"
6" X 1"	45"	45"	28"	48" X 72"
8" X 1"	48-3/4"	49-1/4"	30"	48" X 72"
10" X 1"	54"	50"	34"	48" X 72"
10" X 12" X 1"	58"	50"	36"	48" X 72"

#### Clearances for Fire Pit Meter

Meter Size	A	B	C	Door Size
2"	37"	28"	21"	36" X 36"
3"	38"	29"	23"	36" X 36"
4"	39"	30"	25"	36" X 36"
5"	43"	30"	28"	60" X 60"
6"	36"	36"	30"	60" X 60"